



1th INTERNATIONAL ANTALYA TRAINING COMPETITIONS&TRAINING CAMP

BULLETIN_3

ORGANISING COMMITTEE:

ON BEHALF OF THE NEO SPORT CLUB

Event Director : Yasar İsmet Demiröz
Event Secretary : Mert Günal
Mapping : Georgi Hadzhimitev, Abdulkadir Köseoğlu
Course Planner : Can Hüseyin Şapul, Veysel Güler
IOF Event Advisor : Veysel GÜLER

I. VENUE:

Antalya Training Races will take place in Antalya region. The beautiful forests will be hosting the middle distance and long distance competitions. There will be 22 trainings before and after competitions. All trainings and competitions will challenge your orienteering ability to make rapid decisions and route choices.

EVENT CENTER

CENTER -1 Port River Hotel &Spa (36°45'12.2"N 31°27'35.1"E)

Sorgun Mahallesi, Port River Otel, Titreyengöl Mevkii, Manavgat/Antalya

<https://goo.gl/maps/MMn2RLqEVeN2>

CENTER-2 Club Hotel Sera (36°50'54.8"N 30°48'27.5"E)

07230 Lara / Antalya / Türkiye

<https://goo.gl/maps/y8FmSmcyKY32>

DATES		Morning Session				Afternoon Session			Evening Session	
		SHUTTLE FROM HOTEL	ARRIVAL	LENGHT OF COURSE	HOTEL TO ARENA	SHUTTLE FROM HOTEL	ARRIVAL	LENGHT OF COURSE	HOTEL TO ARENA	HOTEL TO ARENA
16.02.	SATURDAY									
17.02.	SUNDAY	08:30	OYMAPINAR SOUTH +SI	60 min	25 KM	13:45	ILICA SPRINT	20 min		15 KM
18.02.	MONDAY	08:45	SIDE SPRINT +SI	20 min	12 KM	13:45	OYMAPINAR NORTH (LINE-O)	60 min		27 KM
19.02.	TUESDAY	08:30	AQUADUCT +SI	50min	30KM	NO SHUTTLE FOLLOW TAPES-100 METER	SPRINT-FOREST	4 x 6min	(ALTERNATIVE, NIGHT-O)	TİTREYENGÖL-NEXT TO HOTEL
20.02.	WEDNESDAY	08:30	SELEUKEIA CONTROL PICKING	60min	25KM	NO SHUTTLE FOLLOW TAPES-11 KM	SORGUN- ONE MAN RELAY +SI	45 min	(ALTERNATIVE, NIGHT-O MASS START)	5KM
21.02.	CHECK OUT FROM SIDE TO ANTALYA HOTEL (12:30-14:30)	07:45 LUNCH AT HOTEL (12:30-14:30)	SELGE CONTROL PICKING	60min	90KM	15:00	KUMKÖY-DIRECTION TRAINING	50min	(ALTERNATIVE, RAFTING)	15KM
22.02.	FRIDAY	08:15	WRE-LONG EKSİLİ	75-90min	42KM	-	COMPETITION			-
23.02.	SATURDAY	FOLLOW THE TAPES-2KM	WRE-MIDDLE-LARA	35-40min	1 KM	-	COMPETITION			-
24.02.	SUNDAY	08:15	WRE-LONG-GEBİZ	70-85min	44KM	-	COMPETITION			
25.02.	MONDAY	08:30	TÖNGÜÇLÜ CONTROL PICKING	60 min	35 KM	14:00	KURŞUNLU NORTH (MEMORY-O)	60 min		15 KM
26.02.	TUESDAY	08:30	ÇAKIRLAR GEO (FIRST CONTROL)	70 min	30 KM	14:30	EXPO SPRINT-COMPETITION +SI	15 min		20 KM
27.02.	WEDNESDAY	08:30	DÜZLERÇAMI WEST (COMPASS-O)	60 min	35 KM	13:45	ÇAKIRLAR ESA (CORRIDOR-O)	60 min		30 KM
28.02.	THURSDAY	08:30	VARSAK (BLACK-O)	50 min	30 KM	14:00	DÜZLERÇAMI EAST-(MASS START) +SI	45 min		35 KM
01.03.	FRIDAY	08:30	DUACI (CONTOUR.LINE-O CORRIDOR)	60 min	30 KM	14:00	UNIVERSITY-SPRINT +SI	15 min	ALTERNATIVE, LARA-(NIGHT-O)	25 KM
02.03.	SATURDAY	08:30	KALEİÇİ-SPRINT COMPETITION +SI	15 min	20 KM	14:00	GLASS PYRAMID-SPRINT COMPETITIONS +SI	15 min		25 KM
03.03.	SUNDAY		Departure							

*MORNING TRAININGS WILL BE OPEN FROM 09:30 TO 11:30

*AFTERNOON TRAININGS WILL BE OPEN FROM 14:30 TO 16:30

TRANSPORTATION

Antalya International Airport is the nearest international airport to the competition area. Many countries have direct economic direct flights to Antalya. It is 65/12 km from the airport to the Event Centers.

There is no official transfers between Event Center-Competition areas and airport. The transfer fee to competition areas is 10 € per day, if you want to use rental bus.

ENTRY FEE

Registration for All Stages: 75,00 EURO

Registration for Single Stage: 25,00 EURO,

PUNCHING SYSTEM

SPORTIdent electronic punching system will be used in all races. You can rent an SI card from the organizers. More information at website.

COORDINATES

You can find it all area coordinates on the website.

ANTALYA TRAINING COMPETITIONS(WRE)

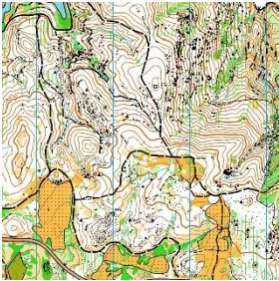
*Start list and results list will be published on the website.

*You can take the bib numbers from the desk at the assembly area of stage 1.

*IMPORTANT NOTE:

The maps for ONLY **WRE, EKSILI AND GEBİZ** will printed in two face, back and front.

Stage-1 22.02.2019 Friday



Long Distance - **Ekşili**

Firs start at 10:00 (GMT+3)

Coordinate (37.1578, 30.69058)

42 km from Event Center.

Stage-2 23.02.2019 Saturday



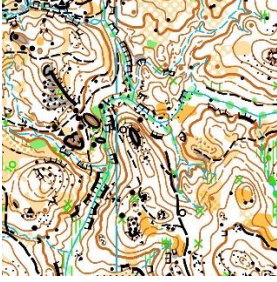
Middle Distance – **Lara**

Firs start at 10:00 (GMT+3)

Coordinate (36.84916, 30.81436)

2 km from Event Center.

Stage-3 24.02.2019 Sunday

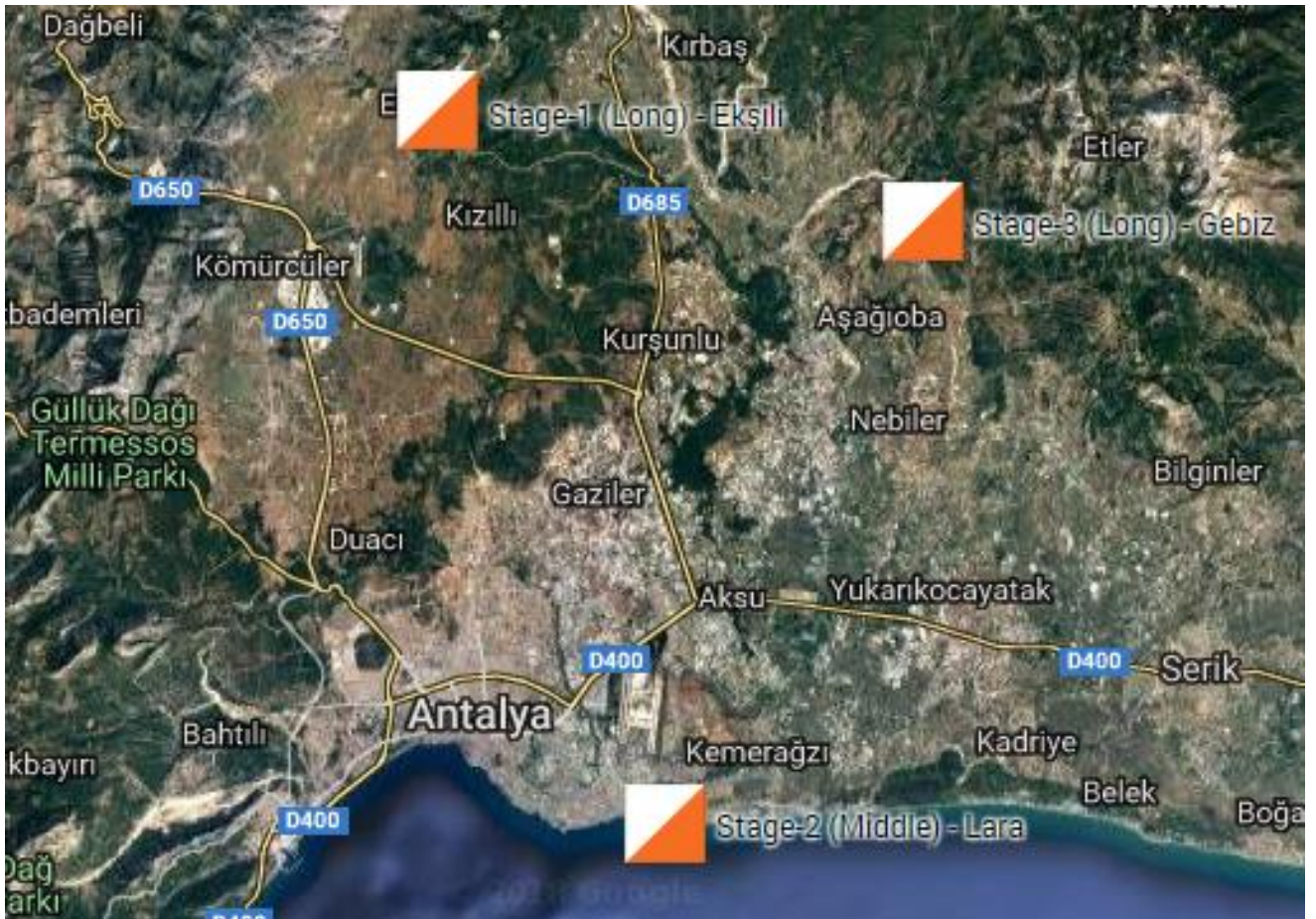


Long Distance – **Gebiz**

First start at 10:00 (GMT+3)

Coordinate (37.11013, 30.95408)

44 km from Event Center.



ANTALYA TRAINING COMPETITIONS CLASSES

M/W10, 12, 14, 16A, 18A, 20A, 21A, 21E, 35, 40, 45, 50, 55, 60, 65, 70, 75+, MBS, MBL, WBL * The organizer reserves the right to combine classes according to IOF rules if there are fewer participants than 5 in a class.

TRAINING CAMPS will have 4 different courses for every training day; BEGINNER, EASY, MIDDLE, LONG in Every STAGES.

COURSES

EKŞİLİ			LARA			GEBİZ		
Class	Length	Conrols	Class	Length	Conrols	Class	Length	Conrols
MBS	1.2	6	MBS	1.2	7	MBS	1.8	8
MBL	1.8	8	MBL	1.5	11	MBL	2.0	10
M10	1.2	6	M10	1.1	6	M10	1.8	8
M12	1.4	7	M12	1.4	10	M12	1.9	9
M16A	4.8	13	M16A	3.6	13	M16A	5.5	20
M18A	6.4	16	M18A	4.5	17	M18A	7.5	22
M20A	8.7	20	M20A	5.4	21	M20A	9.2	26
M21A	8.3	18	M21A	5.1	18	M21A	6.3	18
M21E	13.7	32	M21E	6.0	25	M21E	13.3	30
M35	8.2	19	M35	5.1	19	M35	9.1	25
M40	7.2	18	M40	4.7	18	M40	7.5	22
M45	7.0	17	M45	4.5	15	M45	6.9	19
M50	5.5	17	M50	4.1	18	M50	6.3	21
M55	5.2	15	M55	3.8	16	M55	6.0	19
M60	4.6	15	M60	3.5	14	M60	4.4	14
M70	4.2	13	M70	3.5	12	M70	4.2	16
WBS	1.2	7	WBS	1.1	7	WBS	1.7	8
WBL	1.6	7	WBL	1.4	9	WBL	1.7	9
W12	1.4	7	W12	1.2	9	W12	1.7	8
W14	3.6	12	W14	2.9	12	W14	4.2	14
W16A	4.1	14	W16A	3.5	14	W16A	4.6	16
W16B	3.6	12	W16B	3.1	14	W16B	3.6	13
W18A	5.4	14	W18A	3.7	17	W18A	6.2	18
W18B	4.7	13	W18B	3.6	15	W18B	5.0	15
W20A	7.5	21	W20A	4.1	18	W20A	6.8	18
W21A	7.3	20	W21A	4.1	18	W21A	5.1	16
W21E	11.5	26	W21E	5.5	24	W21E	10.9	25
W35	7.3	20	W35	4.0	16	W35	6.3	18
W40	5.8	17	W40	3.6	16	W40	6.1	18
W45	5.6	16	W45	3.6	15	W45	5.9	18
W50	5.0	16	W50	3.4	14	W50	5.2	16
W55	4.6	14	W55	3.3	15	W55	5.2	15
W60	3.9	15	W60	3.0	13	W60	4.4	16

AWARDS

Antalya Training Competitions awards: Medals for the 1st to 3rd in each class, based on the overall standing after all 3 stages. Prize-giving will be LAST DAY after Stage 3.

Prizes for overall winners in MW21E WRE competitions:

1. 750€
2. 500€
3. 300€
4. 200€
5. 150€
6. 100€

CONTACT INFORMATION

Event Director: Yasar İsmet Demiröz

yasar@eontours.com

Technical Director: Can Hüseyin Şapul

can@eontours.com

Event Secretary: Mert Günal

mert@eontours.com

Event Advisor: Veysel Güler

vguler72@gmail.com



www.eonorienteering.com