



## 4<sup>th</sup> INTERNATIONAL ANTALYA TRAINING CAMP & ANTALYA O-MEETING COMPETITIONS 2022

### BULLETIN-3

#### ORGANISING COMMITTEE:

#### ON BEHALF OF THE NEO SPORT CLUB

- Event Director : Yasar İsmet Demiröz  
Technical Director : Mert Günal  
Event Secretary : Ramazan Bostancı  
Mapper : Georgi Hadzhimitev, Mehmet Küçükçolak  
Course Planner : Ramazan Bostancı  
Controller : Mehmet Küçükçolak  
IOF Event Advisor : Veysel Güler  
Jury Members : Laimis Drazdauskas (Lithuania), Jürg Wälchli (Switzerland),  
Vasyl Tkachenko (Ukraine)

#### VENUE:

4<sup>th</sup> International Antalya Training Camp & Competitions will take place in Antalya region. Our training camp and competitions will be organize about 11 Trainings & 3 WRE Competitions in February 19<sup>th</sup> to February 27<sup>th</sup> , 2022. You will have the opportunity to train on different terrains in these periods. In addition, all trainings and competitions will challenge your orienteering ability to make rapid decisions and route choices.

*journey through the ages*

#### Eon Tours

Toros Mah. 824 Sok. No: 13-1, 07070 Antalya

E-mail: [ramazan@eontours.com](mailto:ramazan@eontours.com)

[www.eonorienteeing.com](http://www.eonorienteeing.com)

## EVENT CENTER

Club Hotel Sera - Address: 07230 Lara / Antalya / TURKEY

### Location

## PROGRAMME DETAILS

4 <sup>th</sup> INTERNATIONAL ANTALYA TRAINING CAMP & ANTALYA O-MEETING COMPETITIONS 2022 PROGRAMME				
DATE	MORNING SESSION		AFTERNOON SESSION	
	MAP NAME	CITY CENTRE TO ARENA	MAP NAME	CITY CENTRE TO ARENA
Feb 19	Kumköy 36.857749,30.932179	30 km	Kurşunlu 37.014470,30.822743	22 km
Feb 20	Selge 37.226802,31.133578	102 km	Selge	102 km
Feb 21	Lyrboton Kome 36.997790,30.725073	14 km	Atatürk Park 36.884711,30.688411	5 km
Feb 22	Düzlerçamı 36.984183,30.554077	11 km	Akdeniz University 36.894632,30.650303	8 km
Feb 23	Lara 36.851933,30.807348	17 km	Hacısekililer 36.860307,30.533774	20 km
Feb 24	Balbey 36.889049,30.709713	2 km	-	-
Feb 25	<b>Antalya O Meeting Stage-1 (WRE) Long Distance</b>		Ekşili	45 km
Feb 26	<b>Antalya O Meeting Stage-2 (WRE) Middle Distance</b>		Duacı	15 km
Feb 27	<b>Antalya O Meeting Stage-3 (WRE) Sprint</b>		Geyikbayırı	30 km

\*Morning trainings will be open from 09:30 to 11:30

\*Afternoon trainings will be open from 15:00 to 17:00

— journey through the ages —

### Eon Tours

Toros Mah. 824 Sok. No: 13-1, 07070 Antalya

E-mail: [ramazan@eontours.com](mailto:ramazan@eontours.com)

[www.eonorientteering.com](http://www.eonorientteering.com)

## TRAINING DISTANCE DETAILS

Date	Session	Map Name & Coordinates - Scale	TRAINING DISTANCES							
			LONG		MIDDLE		SHORT		BEGINNER	
			Dist. (km)	Cp	Dist. (km)	Cp	Dist. (km)	Cp	Dist. (km)	Cp
Feb 19	AM	<a href="#">Kumköy</a> 1/7.500	6.8	26	5.4	21	3.7	16	1.8	8
	PM	<a href="#">Kursunlu</a> 1/10.000	8.0	21	6.5	17	4.8	11	2.2	5
Feb 20	AM	<a href="#">Selge</a> 1/5.000	5.0	20	3.7	13	2.8	10	0.7	5
	PM	<a href="#">Selge</a> 1/4.000	2.9	19	2.4	15	1.8	10	0.9	6
Feb 21	AM	<a href="#">Lyrboton Kome</a> 1/3.000	3.8	49	2.1	22	1.7	17	0.8	8
	PM	<a href="#">Atatürk Park</a> 1/4.000	2.9	19	2.3	14	1.9	11	1.0	7
Feb 22	AM	<a href="#">Düzlerçamı</a> 1/10.000	6.2	18	5.5	15	4.1	11	1.6	6
	PM	<a href="#">Akdeniz Uni</a> 1/4.000	3.2	17	2.4	14	1.6	9	1.0	7
Feb 23	AM	<a href="#">Lara</a> 1/7.500	6	27	4.9	21	3.5	13	1.2	7
	PM	<a href="#">Hacısekililer</a> 1/10.000	5.3	20	4.5	17	3.6	13	1.5	6
Feb 24	AM	<a href="#">Balbey</a> 1/2.500	2.7	18	-	-	-	-	0.8	8

\*Morning trainings will be open from 09:30 to 11:30

\*Afternoon trainings will be open from 15:00 to 17:00

**Attention!!!** When you click map names, you can get directions to assembly area.

## REGISTRATION

Register for **Competitions:** [Click Here](#)

— journey through the ages —

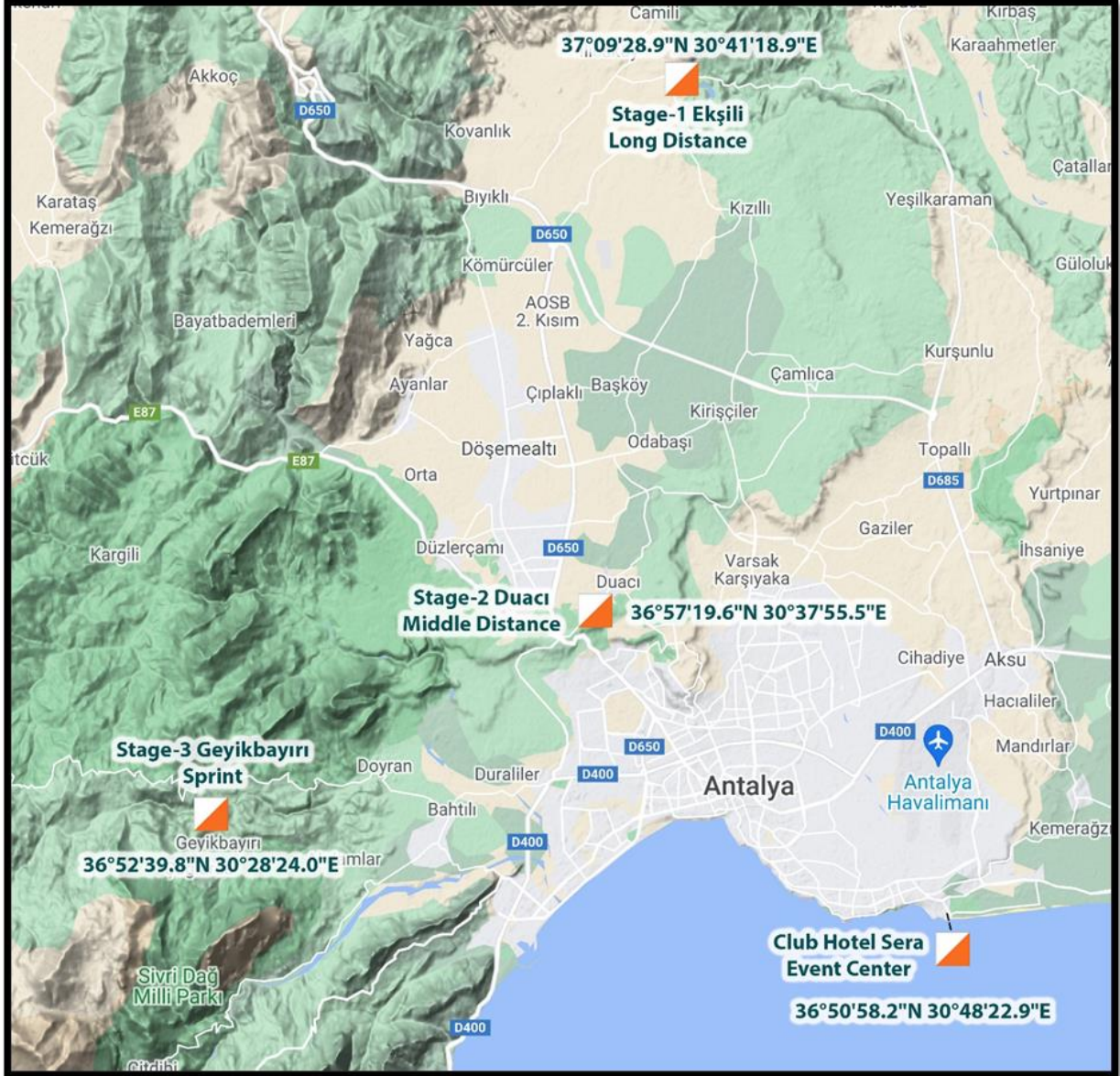
**Eon Tours**

Toros Mah. 824 Sok. No: 13-1, 07070 Antalya

E-mail: [ramazan@eontours.com](mailto:ramazan@eontours.com)

[www.eonorienteering.com](http://www.eonorienteering.com)

**GENERAL MAP OF THE ANTALYA O-MEETING COMPETITIONS**



*— journey through the ages —*

**Eon Tours**

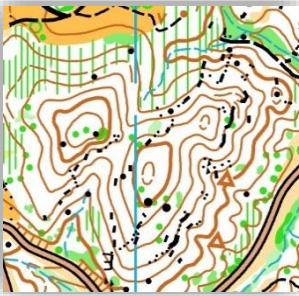
Toros Mah. 824 Sok. No: 13-1, 07070 Antalya

E-mail: [ramazan@eontours.com](mailto:ramazan@eontours.com)

[www.eonorienteering.com](http://www.eonorienteering.com)

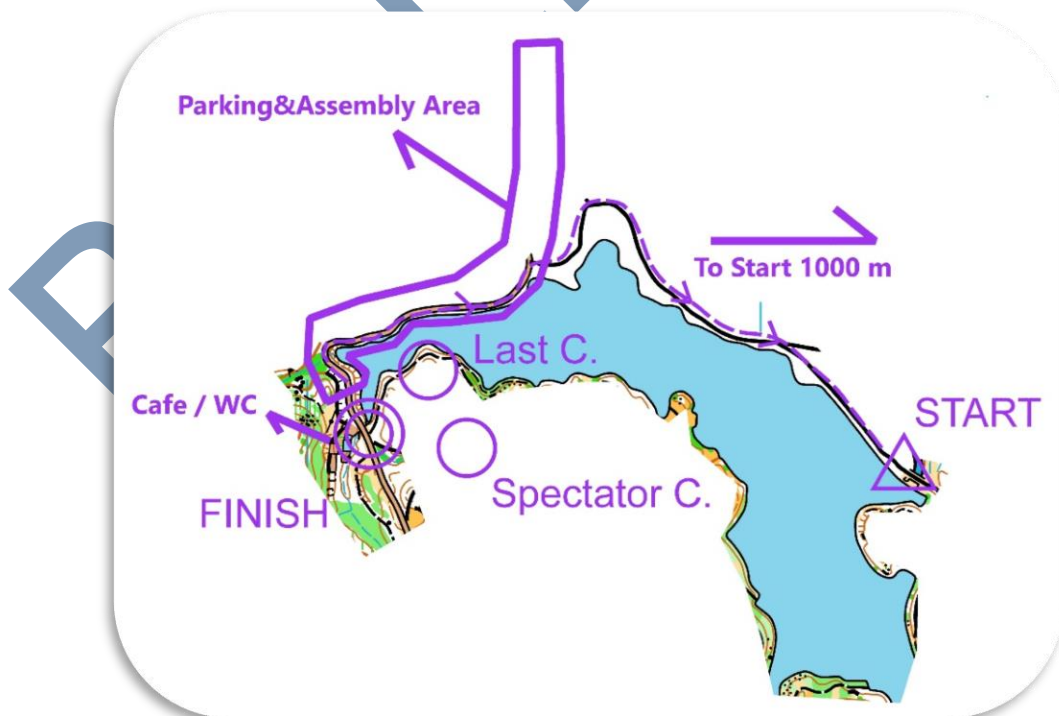
**TERRAIN INFORMATIONS OF ANTALYA O-MEETING COMPETITIONS  
(WRE)**

**Stage-1 Eksili February 25<sup>th</sup>, 2022 (Long Distance-WRE)**



- Terrain has lots of detailed contours and lots of rocky features. Technical terrain and good runability, but some part has less runnability because of stony ground.
- Vegetation: Pine forest and generally good visibility but some part has less visibility because of dense vegetation.
- It is recommended to wear spiky orienteering shoes.
- M21E and W21E courses have 2 option.
- First Start 10:00 AM
- Map Scale:
  - o 1/15.000 M-W35-40, M-W21E, M/W21A, and M-W20
  - o 1/10.000 Other classes

**Assembly Area Location 37°09'28.9"N 30°41'18.9"E**



*journey through the ages*

**Eon Tours**

Toros Mah. 824 Sok. No: 13-1, 07070 Antalya

E-mail: [ramazan@eontours.com](mailto:ramazan@eontours.com)

[www.eonorienteering.com](http://www.eonorienteering.com)

**Stage-2 Duacı February 26<sup>th</sup>, 2022 (Middle Distance-WRE)**



- Terrain has lots of detailed contours and lots of rocky features. Technical terrain and good runability, but some part has less runnability because of stony ground.
- Vegetation: Pine forest and generally good visibility.
- It is recommended to wear spiky orienteering shoes.
- First Start 10:00 AM
- Map Scale:
  - o 1/10.000 M-W35-40, M-W21E, M/W21A, and M-W20
  - o 1/7.500 Other classes

**Assembly Area Location** 36°57'19.6"N 30°37'55.5"E



— *journey through the ages* —

**Eon Tours**

Toros Mah. 824 Sok. No: 13-1, 07070 Antalya

E-mail: [ramazan@eontours.com](mailto:ramazan@eontours.com)

[www.eonorienteeing.com](http://www.eonorienteeing.com)

**Stage-3 Geyikbayırı February 27<sup>th</sup>, 2022 (Sprint-WRE)**



- Terrain, mostly urban area and contains asphalt roads and paved roads. Good runability and visibility.
- Lots of crossable open lands and olive&orchard fields. But the ground of some fields make it difficult to fast run.
- It is recommended stainless trail running shoes.
- First Start 09:00 AM
- Map Scale:

○ 1/4.000 for All Classes

**Assembly Area Location 36°52'39.8"N 30°28'24.0"E**



— *journey through the ages* —

**Eon Tours**

Toros Mah. 824 Sok. No: 13-1, 07070 Antalya

E-mail: [ramazan@eontours.com](mailto:ramazan@eontours.com)

[www.eonorienteering.com](http://www.eonorienteering.com)

## ANTALYA O-MEETING WRE DISTANCES

CLASS	February 25, 2022				February 26, 2022				February 27, 2022			
	Stage-1 Ekşili, Long_Distance(WRE)				Stage-2 Duacı, Middle_Distance(WRE)				Stage-3 Geyikbayırı Sprint(WRE)			
	SCALE	DIST (km)	CLIMB (m)	CP	SCALE	DIST (km)	CLIMB (m)	CP	SCALE	DIST (km)	CLIMB (m)	CP
M10	1/10.000	1,46	50	5	1/7.500	1,4	50	6	1/4.000	0,9	30	6
M14	1/10.000	2,31	70	8	1/7.500	2,0	100	7	1/4.000	1,1	40	7
M16	1/10.000	6,76	165	16	1/7.500	4,1	140	14	1/4.000	2,7	100	15
M18	1/10.000	7,02	175	18	1/7.500	4,3	140	14	1/4.000	2,7	100	15
M20	1/15.000	9,67	300	25	1/10.000	4,6	165	16	1/4.000	3,1	110	15
M21A	1/15.000	9,57	300	25	1/10.000	4,6	160	16	1/4.000	3,1	110	15
M21E	1/15.000	12,25	480	28	1/10.000	5,4	190	19	1/4.000	3,3	130	18
M35-40	1/15.000	9,88	300	25	1/10.000	4,8	180	16	1/4.000	3,1	120	15
M45	1/10.000	7,78	230	22	1/7.500	4,2	155	16	1/4.000	2,8	120	12
M50	1/10.000	6,10	180	16	1/7.500	4,1	150	16	1/4.000	2,8	120	12
M55	1/10.000	5,49	170	16	1/7.500	3,8	125	16	1/4.000	2,7	80	15
M60	1/10.000	4,79	160	14	1/7.500	3,6	100	13	1/4.000	2,5	70	13
M65-70	1/10.000	3,91	115	12	1/7.500	3,3	100	11	1/4.000	2,3	60	13
W14	1/10.000	2,31	70	8	1/7.500	1,9	100	7	1/4.000	1,1	40	7
W16	1/10.000	5,73	150	17	1/7.500	3,7	130	13	1/4.000	2,6	80	15
W18	1/10.000	5,86	160	18	1/7.500	3,8	130	13	1/4.000	2,6	80	15
W20	1/15.000	8,43	240	23	1/10.000	4,1	150	15	1/4.000	2,8	90	14
W21A	1/15.000	8,46	240	22	1/10.000	4,1	150	15	1/4.000	2,8	90	14
W21E	1/15.000	10,71	375	24	1/10.000	4,5	165	17	1/4.000	3,0	100	15
W35-40	1/15.000	8,57	240	22	1/10.000	4,0	160	14	1/4.000	2,7	90	14
W45	1/10.000	6,85	180	18	1/7.500	3,9	150	14	1/4.000	2,7	90	14
W50-55	1/10.000	5,14	155	14	1/7.500	3,8	125	14	1/4.000	2,4	80	13
W60-65	1/10.000	3,98	115	11	1/7.500	3,3	100	11	1/4.000	2,3	60	12
WBL	1/10.000	2,31	70	8	1/7.500	1,9	100	7	1/4.000	1,1	40	7

*journey through the ages*

**Eon Tours**

Toros Mah. 824 Sok. No: 13-1, 07070 Antalya

E-mail: [ramazan@eontours.com](mailto:ramazan@eontours.com)

[www.eonorientteering.com](http://www.eonorientteering.com)



## PUNCHING SYSTEM

SPORTIdent AIR (+) electronic punching system will be used in all races. There will be normal punching system as well.

You can rent SIAC Air(+) card from the organizers. (Only 20 pieces)

If you would like to rent SIAC Air(+) card, you should mail to [mert@eontours.com](mailto:mert@eontours.com).

Rented Normal SI Card/Per Stage price is 3€,

Rented SIAC Air(+)/Per Stage price is €5.

In case the SI card is lost, the fee will be charged by the lessor.

## COURSES & CLASSES

Competition Classes; M10, M14, M16, M18, M20, M21A, M21E, M35-40, M45, M50, M55, M60, M65-70, WBL, W14, W16, W18, W20, W21A, W21E, W35-40, W45, W50-55, W60-65

\* The organizer reserves the right to combine classes according to IOF rules if there are fewer participants than 5 in a class.

Trainings will have 4 different courses for every training day; BEGINNER, SHORT, MIDDLE, LONG courses.

## AWARDS

Antalya O-Meeting Competitions awards: Medals for the 1<sup>st</sup>, 2<sup>nd</sup> and 3<sup>rd</sup> in each class, based on the overall standing after all 3 stages. WRE (Elite Categories) will be awarded individually every day. Prize-giving ceremony will be organize LAST DAY after Stage-3 for all categories.

## PRICES FOR TRAININGS&COMPETITIONS

**Transportation prices:** €15 / per day

**Training prices:** €7,5 for Forest training & €5 for Sprint training

**Antalya O Meeting (WRE) Competition Price:** €25 / Per Stage

---

*journey through the ages*

**Eon Tours**

Toros Mah. 824 Sok. No: 13-1, 07070 Antalya

E-mail: [ramazan@eontours.com](mailto:ramazan@eontours.com)

[www.eonorienteering.com](http://www.eonorienteering.com)

## COVID-19 RESTRICTIONS

Within the scope of combating the COVID-19 pandemic, in order to be able to reach the passengers after their arrival in our country who are at risk for epidemic disease; The "Form for Entry to Turkey" has been developed, which allows to record their contact and address information electronically.

- In addition to transferring the data regarding the passengers to the database of our Ministry, when the "Form for Entry to Turkey" is filled, a HES Code will be created for each passenger and the passengers will be able to use this code during their travels and accommodation in our country.
- In this context, all passengers who will come to our country by airplane as of 15.03.2021 have to fill out the "Form for Entry to Turkey" at <https://register.health.gov.tr/> within 72 hours before their travel.
- After filling out the form the passengers should print out the form or download it on to their mobile devices (Mobile phone, tablet)
- The form will be checked by the airline companies via mobile device screen or paper output to ensure it is filled out before the flight and passengers who did not filled out the form they will be asked to fill out the form before the flight.
- International transfer/passengers, flight crew and passengers younger than 6 years old do not need to fill out this form.

Please click Turkish Map on <https://www.iatatravelcentre.com/world.php> this webpage. You will have all informations regarding to COVID-19. Please visit Health Ministry webpage to have more information as well: [https://covid19asi.saglik.gov.tr/?\\_Dil=2](https://covid19asi.saglik.gov.tr/?_Dil=2)

## CONTACT INFORMATION

Ramazan Bostancı

E-mail: [ramazan@eontours.com](mailto:ramazan@eontours.com)



*journey through the ages*

**Eon Tours**

Toros Mah. 824 Sok. No: 13-1, 07070 Antalya

E-mail: [ramazan@eontours.com](mailto:ramazan@eontours.com)

[www.eonorienteeing.com](http://www.eonorienteeing.com)